

# Nantucket in the Trees



- 5 Bedrooms and 4.5 Bathrooms
- 3,107 square feet of living space
- Traditional floor plan with great room opening to back yard.
- Beautiful mature landscaping graces front and rear yards.
- Backyard featuring the ultimate outdoor living room with a hand built brick fireplace as the central focus



2100 Pine, Manhattan Beach

REDUCED! \$2,265,000

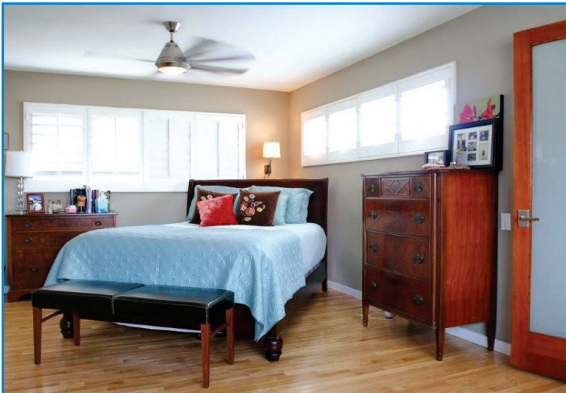
# Premier Downtown Location



- Spacious floor plan with 3 bedrooms and 3 baths.
- Approx. 2,250 sqft of living space on a 3,738 sqft lot corner lot (per assessor).
- Brand new gourmet kitchen with open design.
- Centrally located close to the beach, schools, parks and more.

500 14th Street • Manhattan Beach

REDUCED! \$1,399,000



**CASKEY & CASKEY**  
*Finer Home Specialists*  
**310-376-8824**  
**www.caskeyandcaskey.com**



DRE # 01198999

